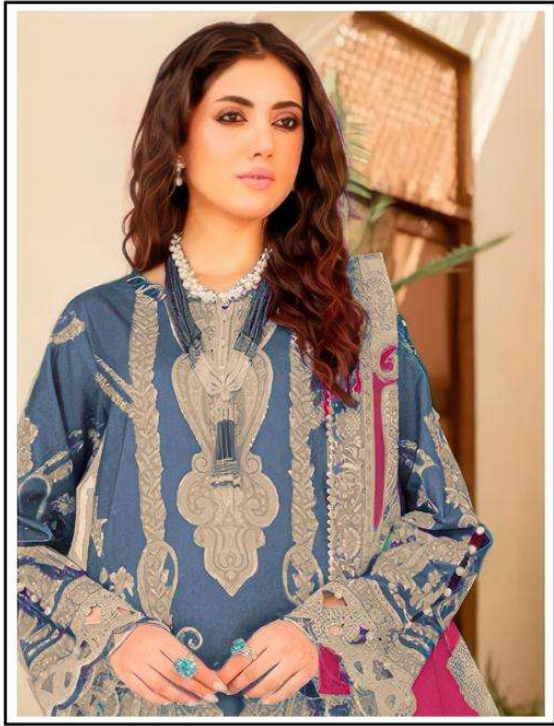


A woman with dark hair pulled back, wearing large ornate earrings and a ring, stands outdoors. She is wearing a vibrant red, long-sleeved dress with intricate white and red embroidery. The embroidery features floral and geometric patterns, particularly along the neckline, sleeves, and hem. The background is a blurred outdoor setting with greenery and a table with pink flowers and glasses.

Alzohaib™

# Aaida

Vol-1



 Alzohaib<sup>TM</sup>

AZ-1350-A  
COTTON DUPATTA



Alzohaib



Alzohaib  
AZ-1198-A  
©2016 Alzohaib



 Alzohaib™

AZ-1350-B  
COTTON DUPATTA



Alzohaib



Alzohaib  
AZ-135B-II  
©2017 ALZOHAIIB

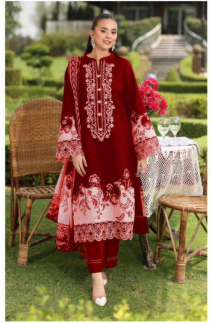


**Alzohaib**<sup>TM</sup>

AZ-1356-A  
COTTON DUPATTA



Alzohaib



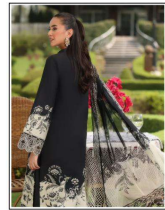
Alzohaib  
AZ-1356-A  
COTTON DUNGEE



 Alzohaib™

AZ-1356-B  
COTTON DUPATTA

Alzohaib



Alzohaib  
AZ-1356-B  
COTTON SUKRETA

# Aaida

Vol-1

Alzohaib™



AZ-1350-A



AZ-1350-B



AZ-1356-A



AZ-1356-B