



HF-784 A

Top :- Heavy Chiffon

Bottom :- Heavy Soft Viscous

Dupatta :- Heavy Chiffon



HOOR TEX

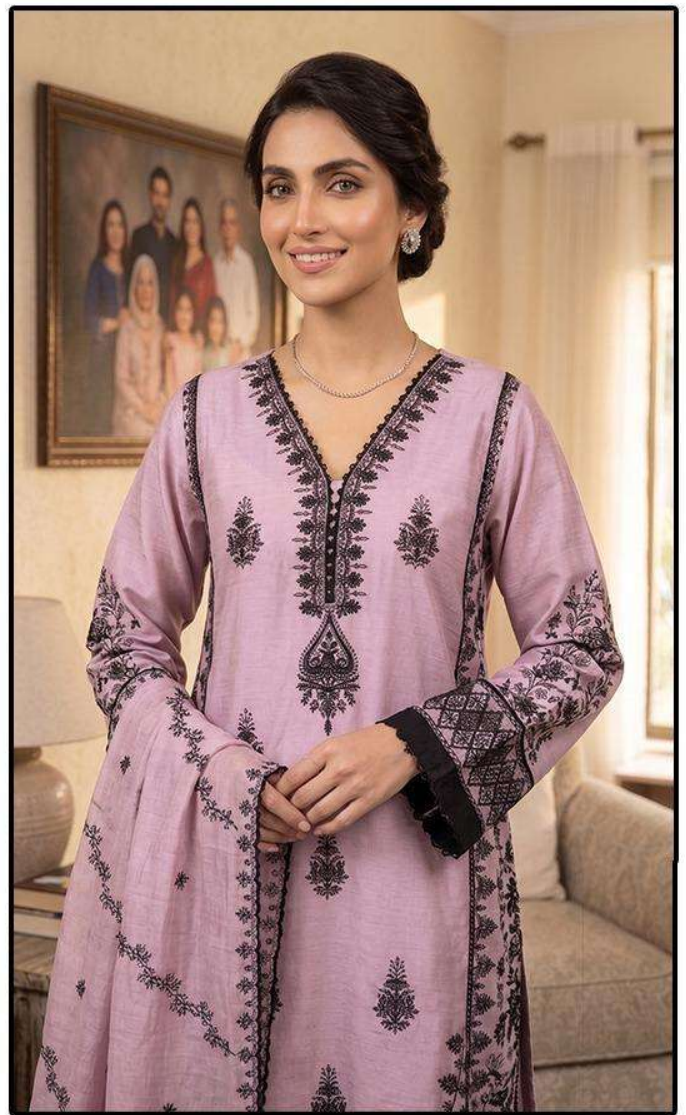
CARE INSTRUCTIONS

DRY CLEAN RECOMMENDED

DO NOT USE ANY TYPE OF BLEACH OR STAIN REMOVING CHEMICALS

DO NOT OVER EXPOSE DAMP FABRIC TO STRONG SUNLIGHT

IRON AT MODERATE TEMPERATURE



HF-784 B

Top :- Heavy Chiffon

Bottom :- Heavy Soft Viscous

Dupatta :- Heavy Chiffon



HOOR TEX

CARE INSTRUCTIONS

DRY CLEAN RECOMMENDED

DO NOT USE ANY TYPE OF BLEACH OR STAIN REMOVING CHEMICALS

DO NOT OVER EXPOSE DAMP FABRIC TO STRONG SUNLIGHT

IRON AT MODERATE TEMPERATURE



HF-784



HF-784 A

Top :- Heavy Chiffon

Bottom :- Heavy Soft Viscous

Dupatta :- Heavy Chiffon



HOOR TEX

CARE INSTRUCTIONS

DRY CLEAN RECOMMENDED

DO NOT USE ANY TYPE OF BLEACH OR STAIN REMOVING CHEMICALS

DO NOT OVER EXPOSE DAMP FABRIC TO STRONG SUNLIGHT

IRON AT MODERATE TEMPERATURE



HF-784



HF-784 C

Top :- Heavy Chiffon

Bottom :- Heavy Soft Viscous

Dupatta :- Heavy Chiffon



HOOR TEX

CARE INSTRUCTIONS

DRY CLEAN RECOMMENDED

DO NOT USE ANY TYPE OF BLEACH OR STAIN REMOVING CHEMICALS

DO NOT OVER EXPOSE DAMP FABRIC TO STRONG SUNLIGHT

IRON AT MODERATE TEMPERATURE



HF-784



HF-784 D

Top :- Heavy Chiffon

Bottom :- Heavy Soft Viscous

Dupatta :- Heavy Chiffon



CARE INSTRUCTIONS

DRY CLEAN RECOMMENDED
DO NOT USE ANY TYPE OF BLEACH OR STAIN REMOVING CHEMICALS
DO NOT OVER EXPOSE DAMP FABRIC TO STRONG SUNLIGHT
IRON AT MODERATE TEMPERATURE

HOOR TEX



HF-784



HOOR TEX



HF-784