

The logo consists of the letters 'H' and 'T' intertwined in a stylized, red font with a white outline.

HOOR TEX



HF-817



HF-817 B

Top :- Cristal Viscous

Bottom :- Cristal Viscous

Dupatta :- Heavy Checks

CARE INSTRUCTIONS

DRY CLEAN RECOMMENDED

DO NOT USE ANY TYPE OF BLEACH OR STAIN REMOVING CHEMICALS

DO NOT OVER EXPOSE DAMP FABRIC TO STRONG SUNLIGHT

IRON AT MODERATE TEMPERATURE



HOOR TEX



HF-817



HF-817 A

Top :- Cristal Viscous

Bottom :- Cristal Viscous

Dupatta :- Heavy Checks

CARE INSTRUCTIONS

DRY CLEAN RECOMMENDED

DO NOT USE ANY TYPE OF BLEACH OR STAIN REMOVING CHEMICALS

DO NOT OVER EXPOSE DAMP FABRIC TO STRONG SUNLIGHT

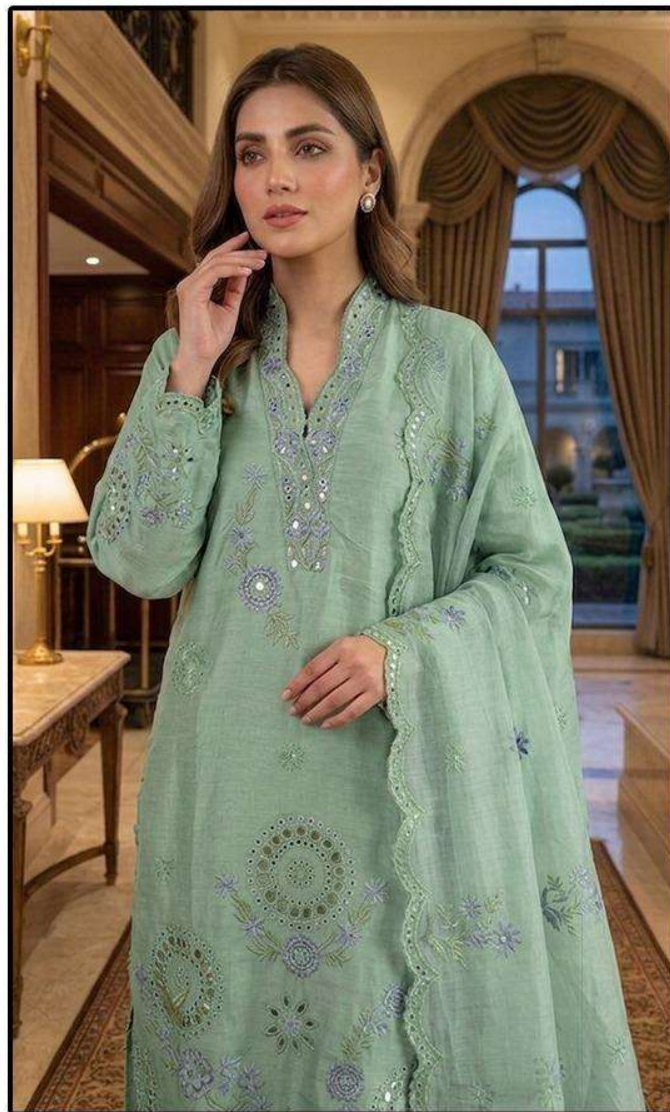
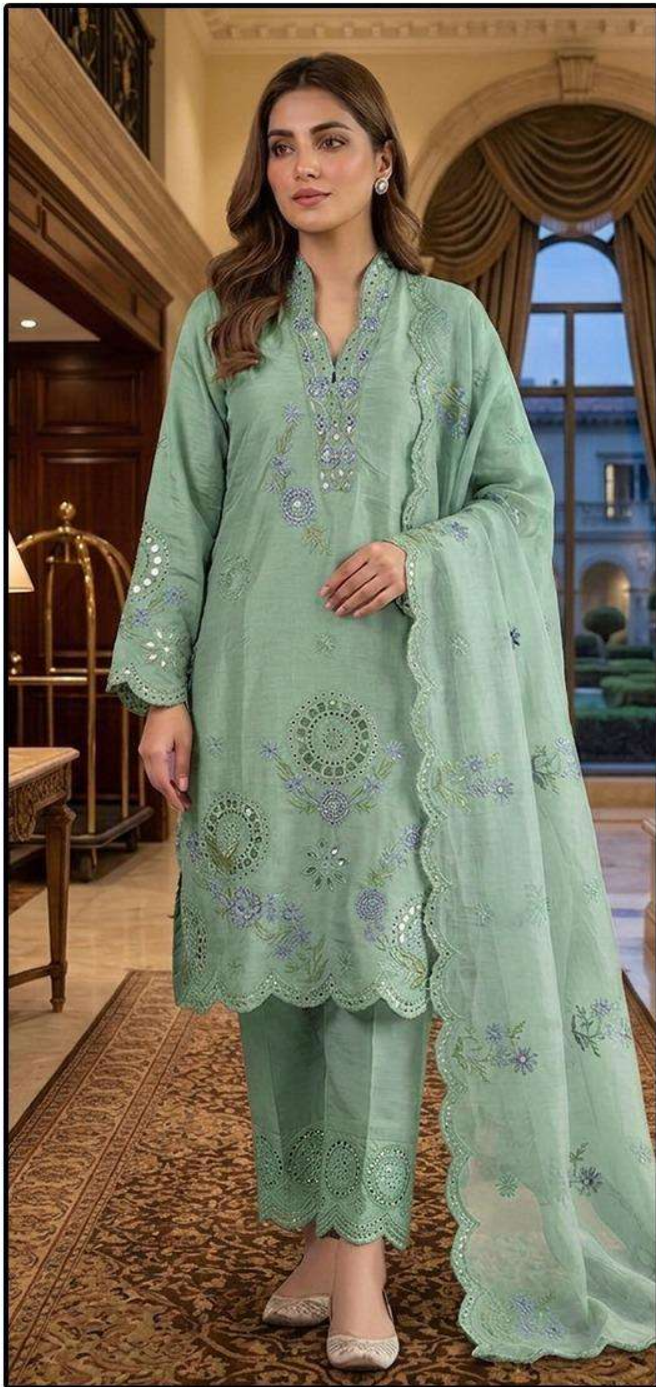
IRON AT MODERATE TEMPERATURE



HOOR TEX



HF-817



HF-817 C

Top :- Cristal Viscous

Bottom :- Cristal Viscous

Dupatta :- Heavy Checks

CARE INSTRUCTIONS

DRY CLEAN RECOMMENDED

DO NOT USE ANY TYPE OF BLEACH OR STAIN REMOVING CHEMICALS

DO NOT OVER EXPOSE DAMP FABRIC TO STRONG SUNLIGHT

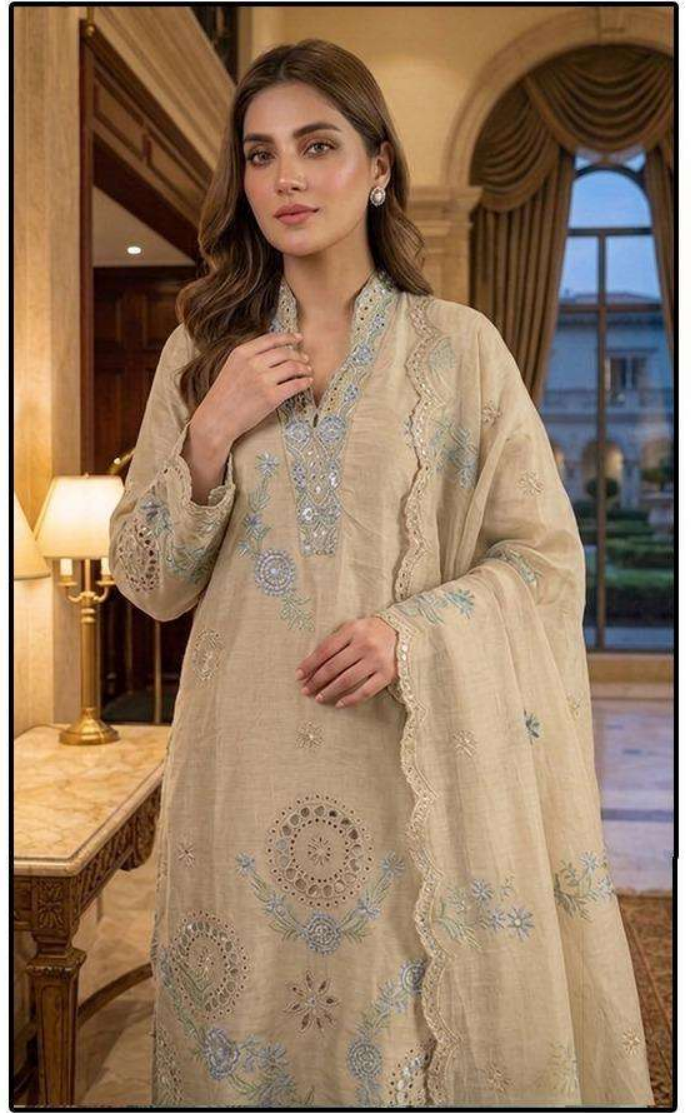
IRON AT MODERATE TEMPERATURE



HOOR TEX



HF-817



HF-817 D

Top :- Cristal Viscous

Bottom :- Cristal Viscous

Dupatta :- Heavy Checks

CARE INSTRUCTIONS

DRY CLEAN RECOMMENDED

DO NOT USE ANY TYPE OF BLEACH OR STAIN REMOVING CHEMICALS

DO NOT OVER EXPOSE DAMP FABRIC TO STRONG SUNLIGHT

IRON AT MODERATE TEMPERATURE



HOOR TEX



HF-817



HF-817 A



HF-817 B



HF-817 C



HF-817 D



HOOR TEX