

D.NO.59 B

TOP
ROMAN WITH COTTON
INNER EMBROIDERY CUT WORK

BOTTOM
ROMAN SILK

DUPATTA
SIFFON WITH READYMADE LACE

SIZE : XL



D.NO.59 A

TOP

ROMAN WITH COTTON
INNER EMBROIDERY CUT WORK

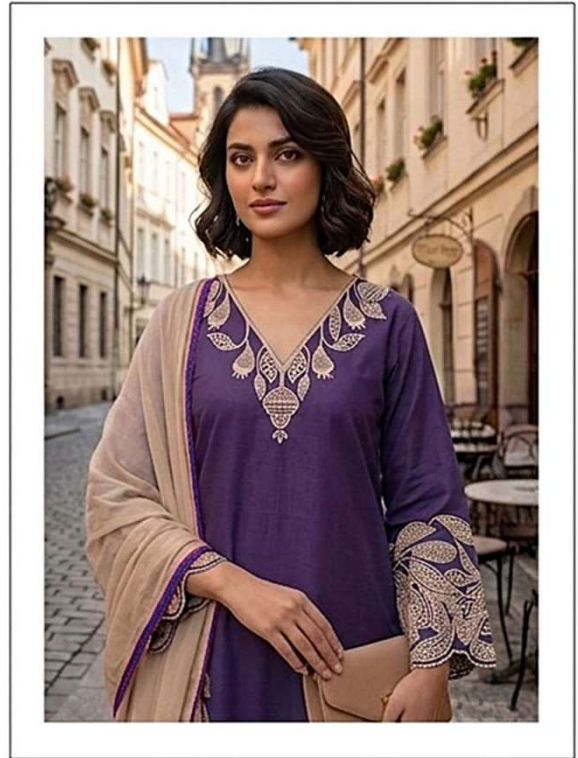
BOTTOM

ROMAN SILK

DUPATTA

SIFFON WITH READYMADE LACE

SIZE : XL



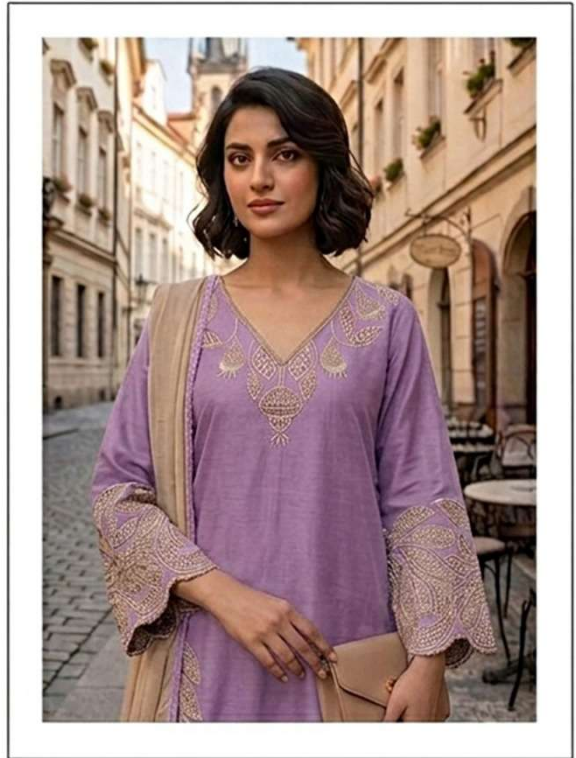
D.NO.59 B

TOP
ROMAN WITH COTTON
INNER EMBROIDERY CUT WORK

BOTTOM
ROMAN SILK

DUPATTA
SIFFON WITH READYMADE LACE

SIZE : XL



D.NO.59 C

TOP

ROMAN WITH COTTON
INNER EMBROIDERY CUT WORK

BOTTOM

ROMAN SILK

DUPATTA

SIFFON WITH READYMADE LACE

SIZE : XL



D.NO.59 E

TOP

ROMAN WITH COTTON
INNER EMBROIDERY CUT WORK

BOTTOM

ROMAN SILK

DUPATTA

SIFFON WITH READYMADE LACE

SIZE : XL



D.NO.59 F

TOP

ROMAN WITH COTTON
INNER EMBROIDERY CUT WORK

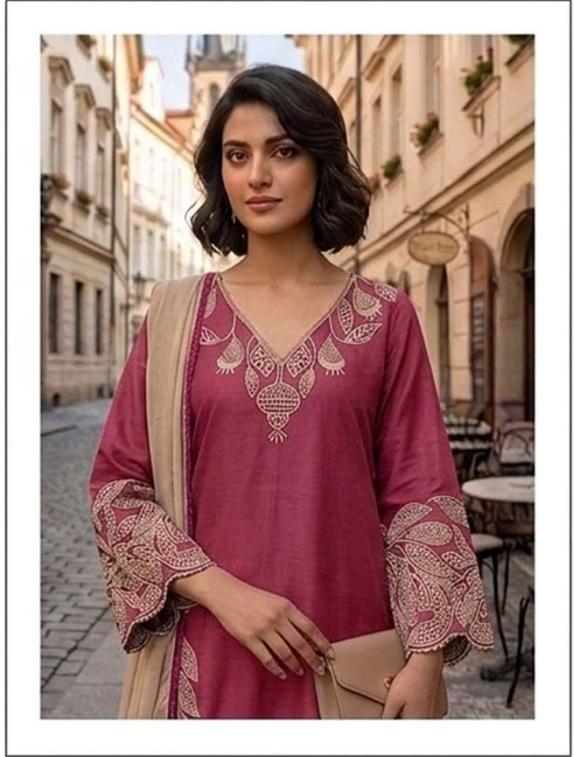
BOTTOM

ROMAN SILK

DUPATTA

SIFFON WITH READYMADE LACE

SIZE : XL



D.NO.59 G

TOP

ROMAN WITH COTTON
INNER EMBROIDERY CUT WORK

BOTTOM

ROMAN SILK

DUPATTA

SIFFON WITH READYMADE LACE

SIZE : XL



D.NO.59 H

TOP

ROMAN WITH COTTON
INNER EMBROIDERY CUT WORK

BOTTOM

ROMAN SILK

DUPATTA

SIFFON WITH READYMADE LACE

SIZE : XL



D.NO.59 D

TOP
ROMAN WITH COTTON
INNER EMBROIDERY CUT WORK

BOTTOM
ROMAN SILK

DUPATTA
SIFFON WITH READYMADE LACE

SIZE : XL



TOP
ROMAN WITH COTTON
INNER EMBROIDERY CUT WORK

BOTTOM
ROMAN SILK

DUPATTA
SIFFON WITH READYMADE LACE

SIZE : XL,XXL



D.NO.59 A



D.NO.59 B



D.NO.59 C



D.NO.59 D



D.NO.59 E



D.NO.59 F



D.NO.59 G



D.NO.59 H