

HF-792 C

Top :- Simmar Pading Shaded
Bottom :- Simmar Pading Shaded
Dupatta :- Simmar Pading Shaded

CARE INSTRUCTIONS

DRY CLEAN RECOMMENDED
DO NOT USE ANY TYPE OF BLEACH OR STAIN REMOVING CHEMICALS
DO NOT OVER EXPOSE DAMP FABRIC TO STRONG SUNLIGHT
IRON AT MODERATE TEMPERATURE



HOOR TEX



HF-792 A

Top :- Simmar Pading Shaded
Bottom :- Simmar Pading Shaded
Dupatta :- Simmar Pading Shaded

CARE INSTRUCTIONS

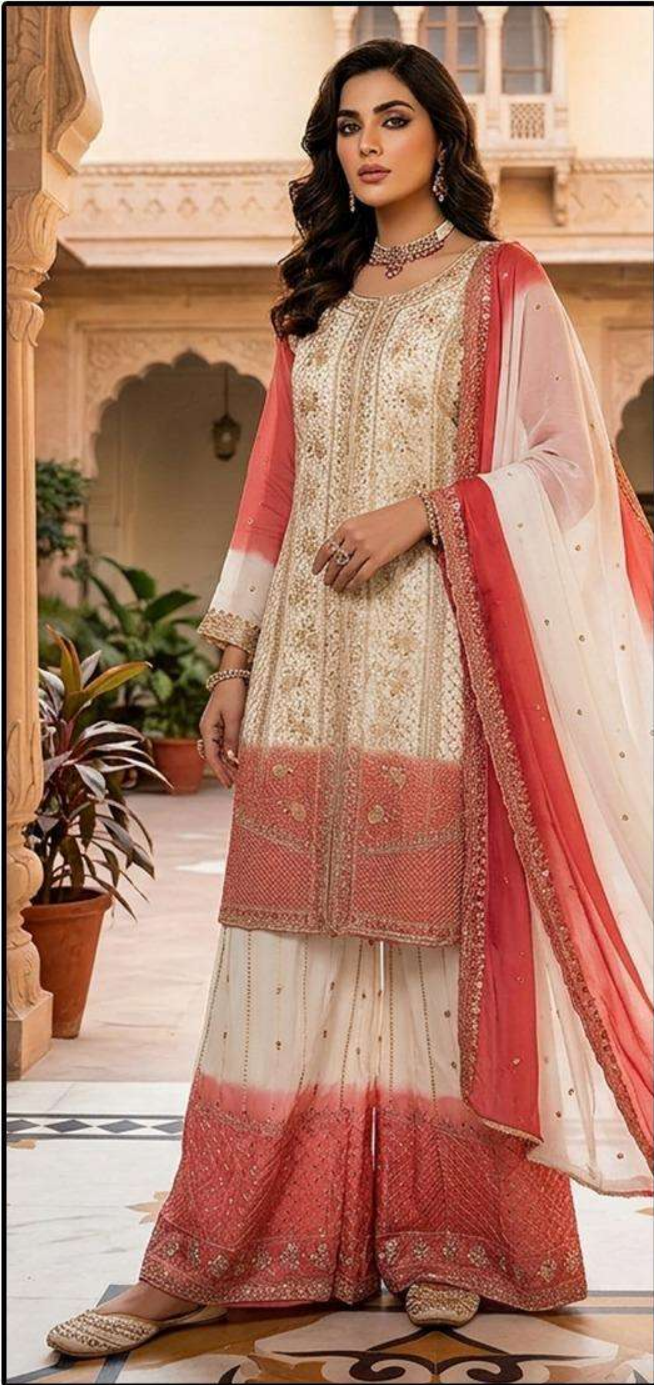
DRY CLEAN RECOMMENDED
DO NOT USE ANY TYPE OF BLEACH OR STAIN REMOVING CHEMICALS
DO NOT OVER EXPOSE DAMP FABRIC TO STRONG SUNLIGHT
IRON AT MODERATE TEMPERATURE



HOOR TEX



HF-792



HF-792 B

Top :- Simmar Pading Shaded
Bottom :- Simmar Pading Shaded
Dupatta :- Simmar Pading Shaded

CARE INSTRUCTIONS

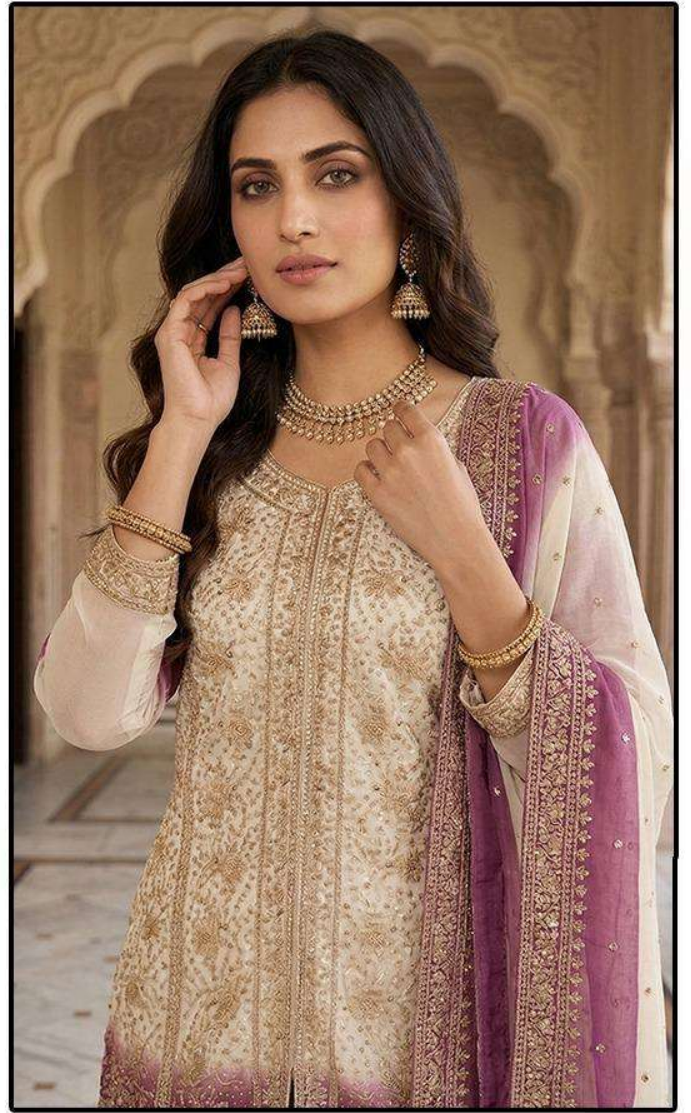
DRY CLEAN RECOMMENDED
DO NOT USE ANY TYPE OF BLEACH OR STAIN REMOVING CHEMICALS
DO NOT OVER EXPOSE DAMP FABRIC TO STRONG SUNLIGHT
IRON AT MODERATE TEMPERATURE



HOOR TEX



HF-792



HF-792 C

Top :- Simmar Pading Shaded
Bottom :- Simmar Pading Shaded
Dupatta :- Simmar Pading Shaded

CARE INSTRUCTIONS

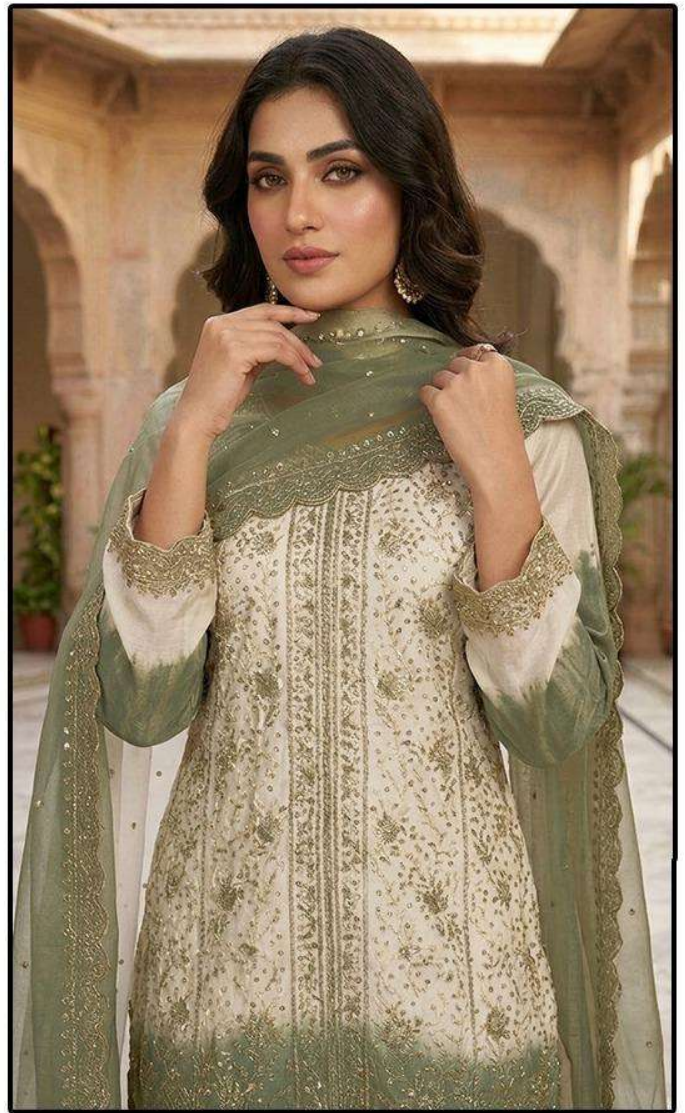
DRY CLEAN RECOMMENDED
DO NOT USE ANY TYPE OF BLEACH OR STAIN REMOVING CHEMICALS
DO NOT OVER EXPOSE DAMP FABRIC TO STRONG SUNLIGHT
IRON AT MODERATE TEMPERATURE



HOOR TEX



HF-792



HF-792 D

Top :- Simmar Pading Shaded
Bottom :- Simmar Pading Shaded
Dupatta :- Simmar Pading Shaded

CARE INSTRUCTIONS

DRY CLEAN RECOMMENDED
DO NOT USE ANY TYPE OF BLEACH OR STAIN REMOVING CHEMICALS
DO NOT OVER EXPOSE DAMP FABRIC TO STRONG SUNLIGHT
IRON AT MODERATE TEMPERATURE



HOOR TEX



HF-792



HF-792 A



HF-792 B



HF-792 C



HF-792 D



HOOR TEX