

HF-636 A

Top :- Heavy Chiffon

Bottom :- Soft Viscous

Dupatta :- Heavy Chiffon

CARE INSTRUCTIONS

DRY CLEAN RECOMMENDED

DO NOT USE ANY TYPE OF BLEACH OR STAIN REMOVING CHEMICALS

DO NOT OVER EXPOSE DAMP FABRIC TO STRONG SUNLIGHT

IRON AT MODERATE TEMPERATURE



HOOR TEX



HF-636 B

Top :- Heavy Chiffon

Bottom :- Soft Viscous

Dupatta :- Heavy Chiffon

CARE INSTRUCTIONS

DRY CLEAN RECOMMENDED

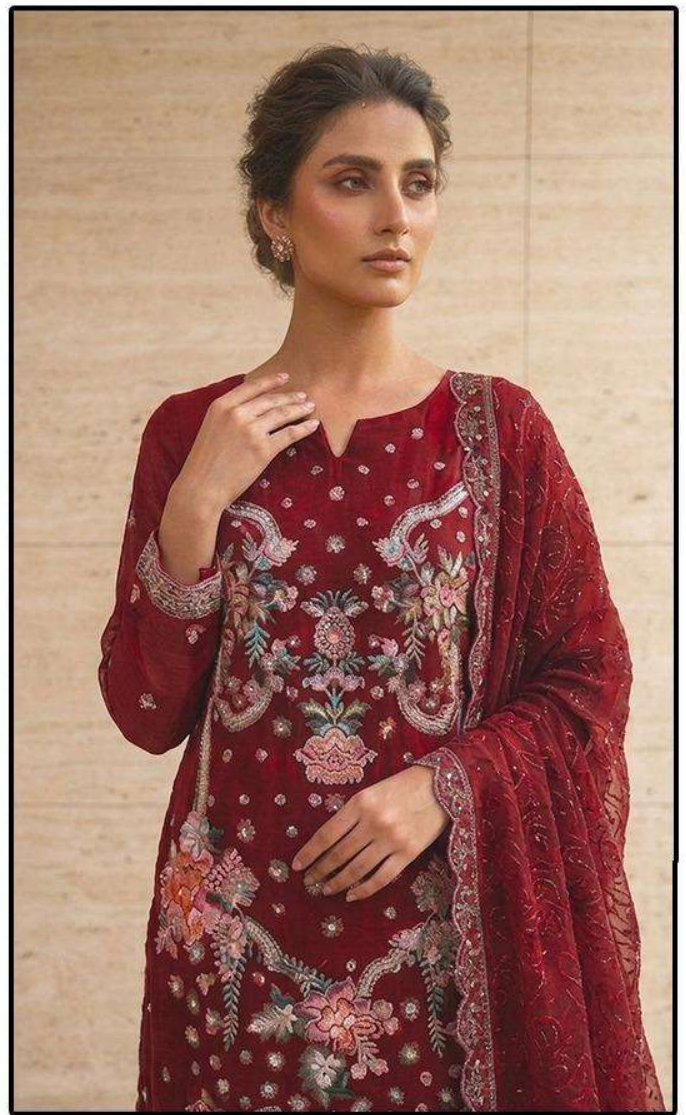
DO NOT USE ANY TYPE OF BLEACH OR STAIN REMOVING CHEMICALS

DO NOT OVER EXPOSE DAMP FABRIC TO STRONG SUNLIGHT

IRON AT MODERATE TEMPERATURE



HOOR TEX



HF-636 A

Top :- Heavy Chiffon

Bottom :- Soft Viscous

Dupatta :- Heavy Chiffon

CARE INSTRUCTIONS

DRY CLEAN RECOMMENDED

DO NOT USE ANY TYPE OF BLEACH OR STAIN REMOVING CHEMICALS

DO NOT OVER EXPOSE DAMP FABRIC TO STRONG SUNLIGHT

IRON AT MODERATE TEMPERATURE



HOOR TEX





HF-636 C

Top :- Heavy Chiffon

Bottom :- Soft Viscous

Dupatta :- Heavy Chiffon



HOOR TEX

CARE INSTRUCTIONS

DRY CLEAN RECOMMENDED

DO NOT USE ANY TYPE OF BLEACH OR STAIN REMOVING CHEMICALS

DO NOT OVER EXPOSE DAMP FABRIC TO STRONG SUNLIGHT

IRON AT MODERATE TEMPERATURE





HF-636 A



HF-636 B



HF-636 C



HOOR TEX



HOOR TEX