

HF-737 D

Top :- Heavy Organza

Bottom :- Viscous Silk

Dupatta :- Heavy Organza



HOOR TEX

CARE INSTRUCTIONS

DRY CLEAN RECOMMENDED

DO NOT USE ANY TYPE OF BLEACH OR STAIN REMOVING CHEMICALS

DO NOT OVER EXPOSE DAMP FABRIC TO STRONG SUNLIGHT

IRON AT MODERATE TEMPERATURE



HF-737 B

Top :- Heavy Organza

Bottom :- Viscous Silk

Dupatta :- Heavy Organza



HOOR TEX

CARE INSTRUCTIONS

DRY CLEAN RECOMMENDED

DO NOT USE ANY TYPE OF BLEACH OR STAIN REMOVING CHEMICALS

DO NOT OVER EXPOSE DAMP FABRIC TO STRONG SUNLIGHT

IRON AT MODERATE TEMPERATURE



HF-737



HF-737 A

Top :- Heavy Organza

Bottom :- Viscous Silk

Dupatta :- Heavy Organza



HOOR TEX

CARE INSTRUCTIONS

DRY CLEAN RECOMMENDED

DO NOT USE ANY TYPE OF BLEACH OR STAIN REMOVING CHEMICALS

DO NOT OVER EXPOSE DAMP FABRIC TO STRONG SUNLIGHT

IRON AT MODERATE TEMPERATURE



HF-737



HF-737 C

Top :- Heavy Organza

Bottom :- Viscous Silk

Dupatta :- Heavy Organza



HOOR TEX

CARE INSTRUCTIONS

DRY CLEAN RECOMMENDED

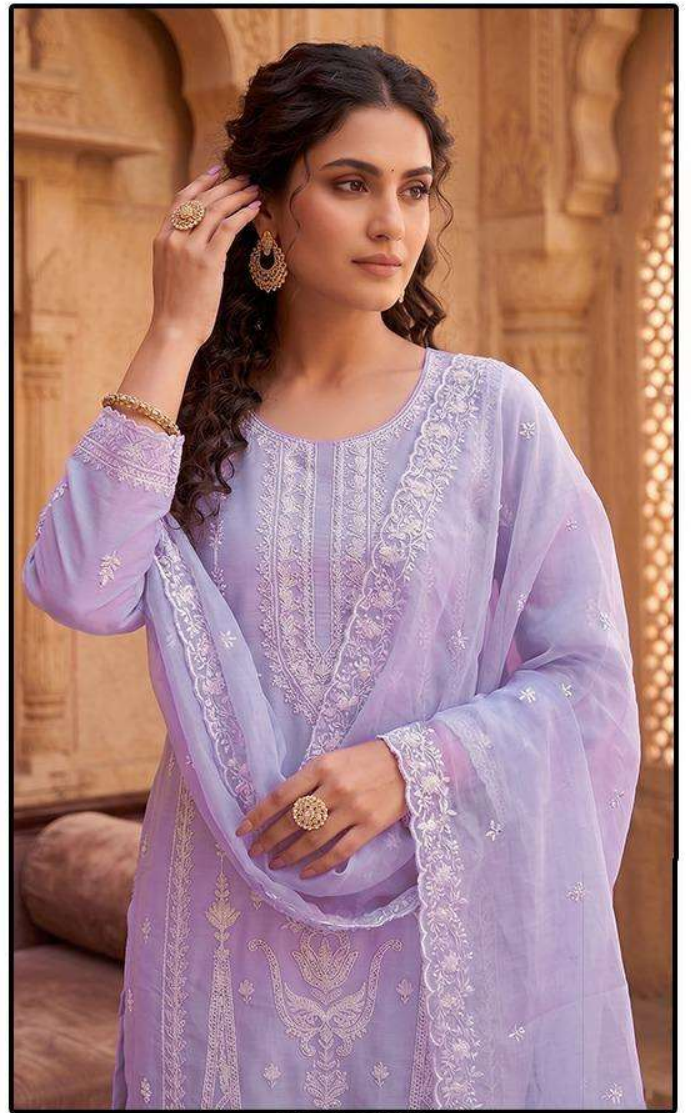
DO NOT USE ANY TYPE OF BLEACH OR STAIN REMOVING CHEMICALS

DO NOT OVER EXPOSE DAMP FABRIC TO STRONG SUNLIGHT

IRON AT MODERATE TEMPERATURE



HF-737



HF-737 D

Top :- Heavy Organza

Bottom :- Viscous Silk

Dupatta :- Heavy Organza



HOOR TEX

CARE INSTRUCTIONS

DRY CLEAN RECOMMENDED

DO NOT USE ANY TYPE OF BLEACH OR STAIN REMOVING CHEMICALS

DO NOT OVER EXPOSE DAMP FABRIC TO STRONG SUNLIGHT

IRON AT MODERATE TEMPERATURE



HF-737



HF-737 A



HF-737 B



HF-737 C



HF-737 D

Top :- Heavy Organza
Bottom :- Viscous Silk
Dupatta :- Heavy Organza



HOOR TEX